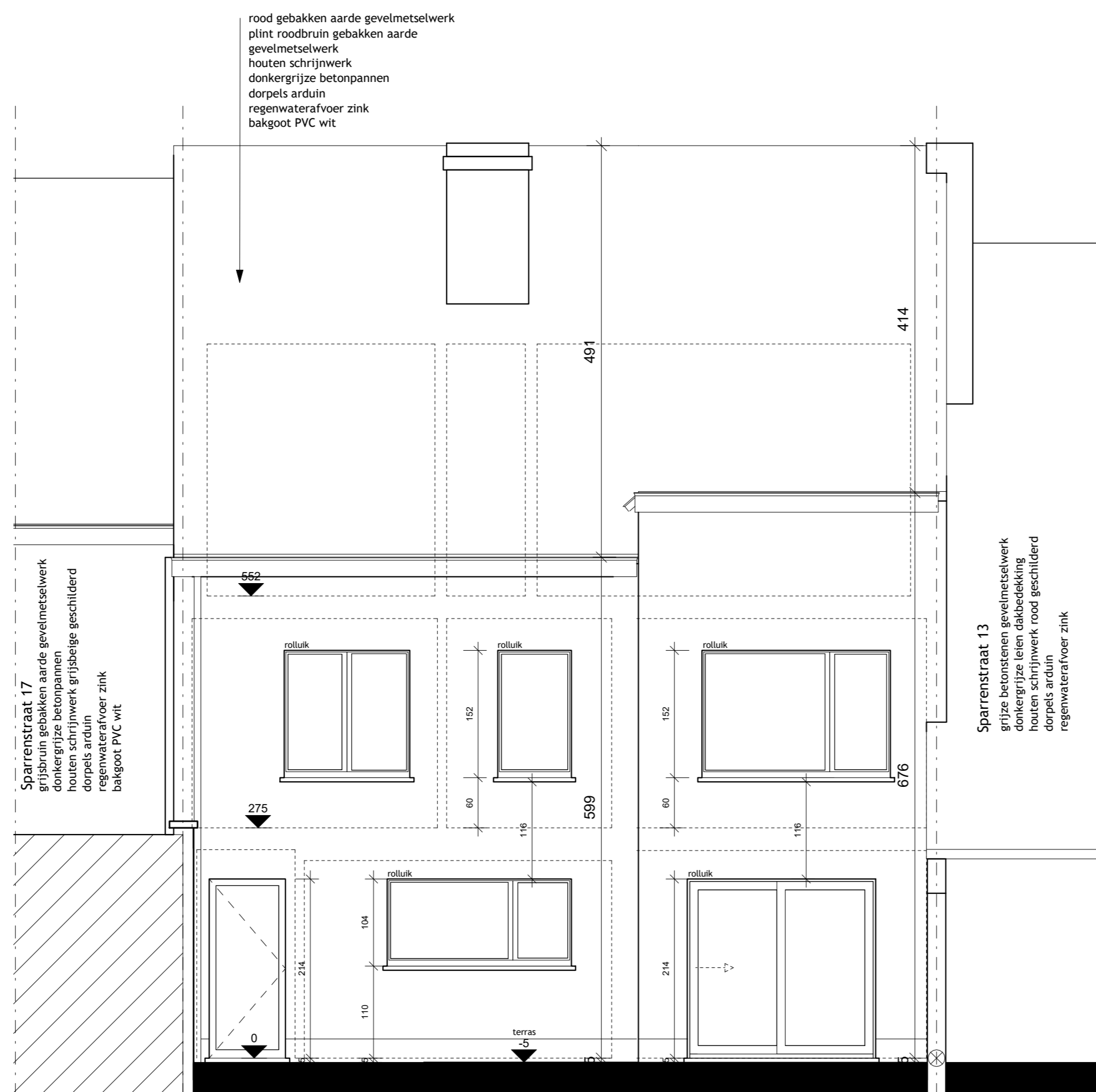
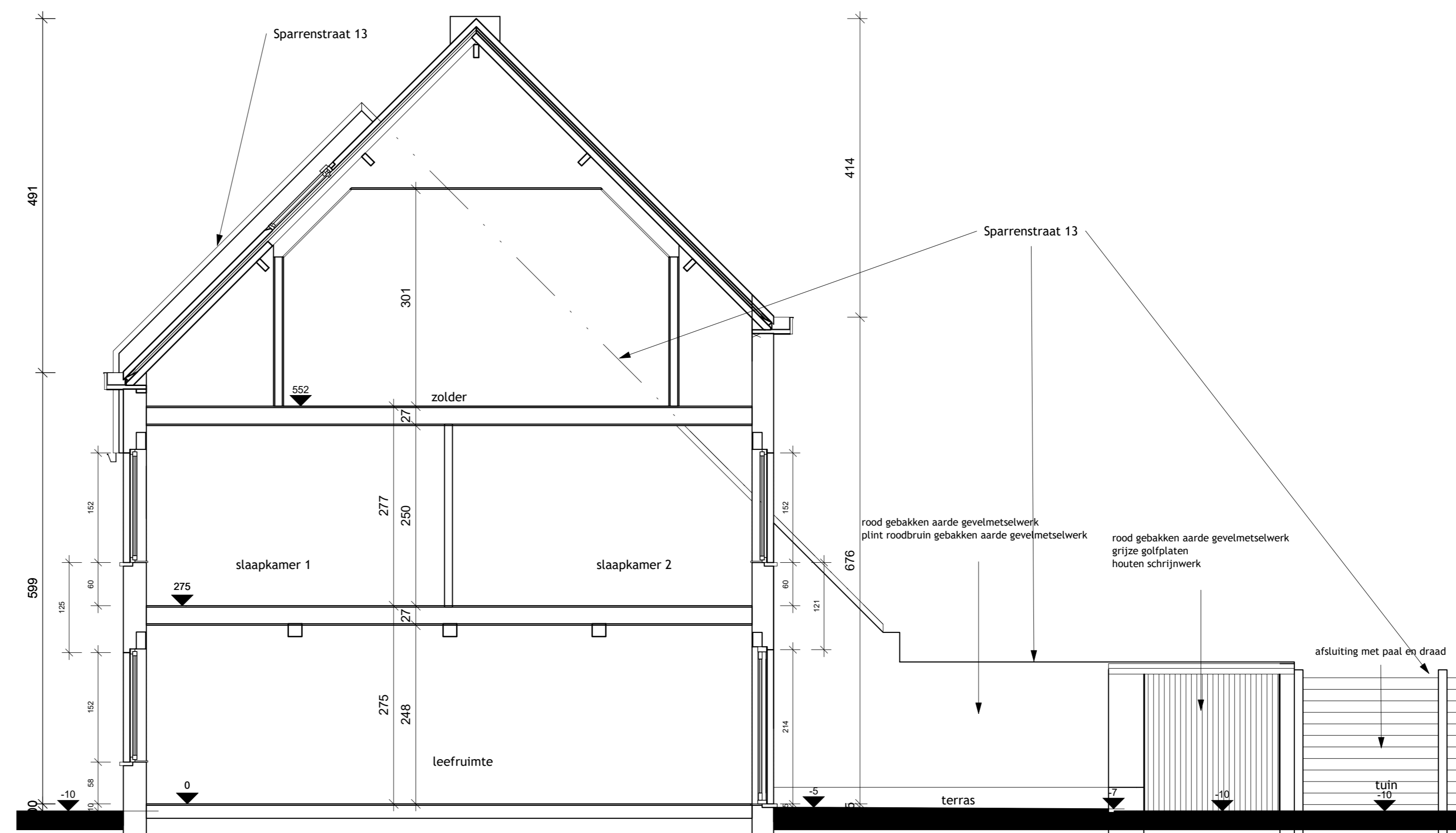


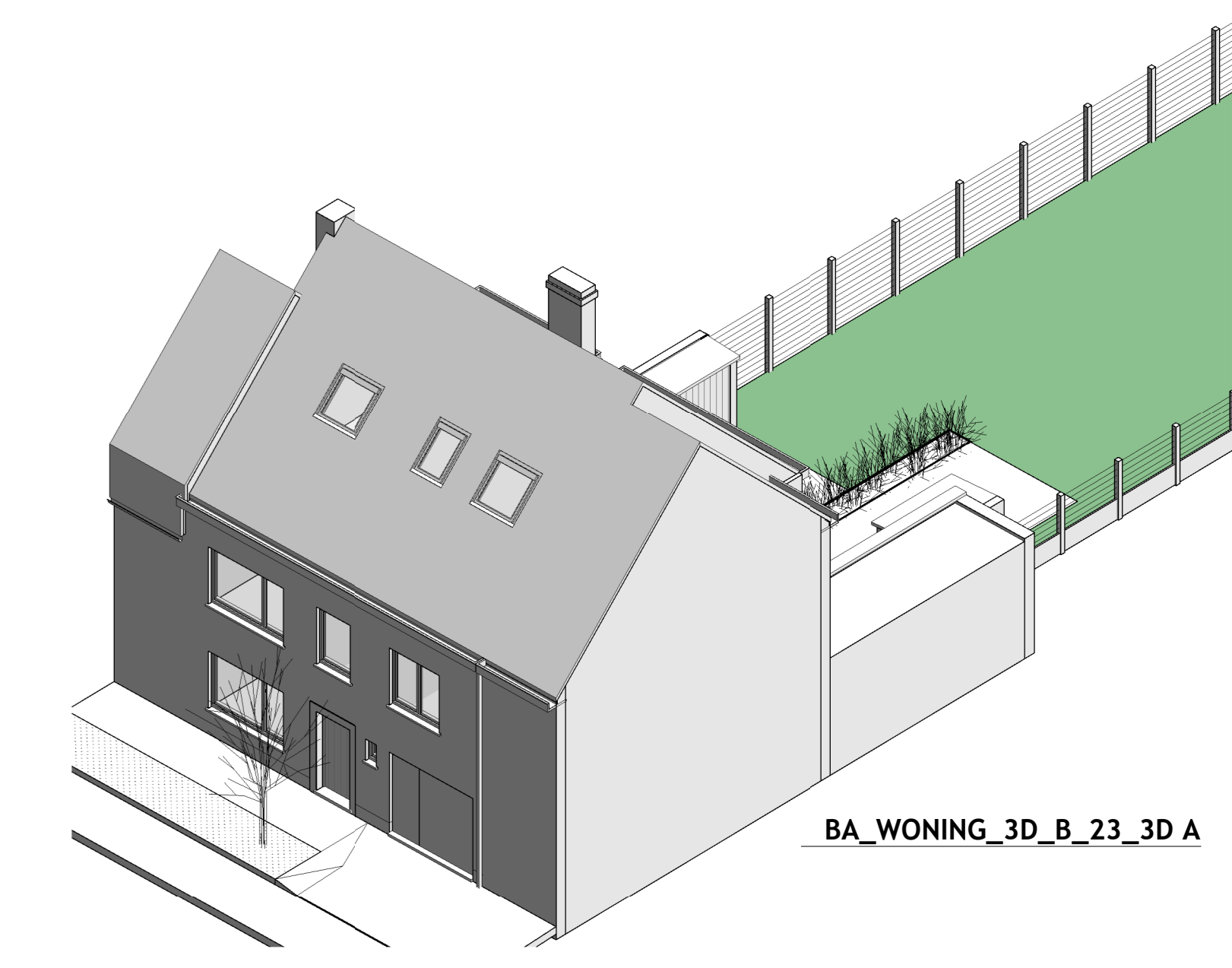
BA_WONING_G_B_19_VOORGEVEL
1:50



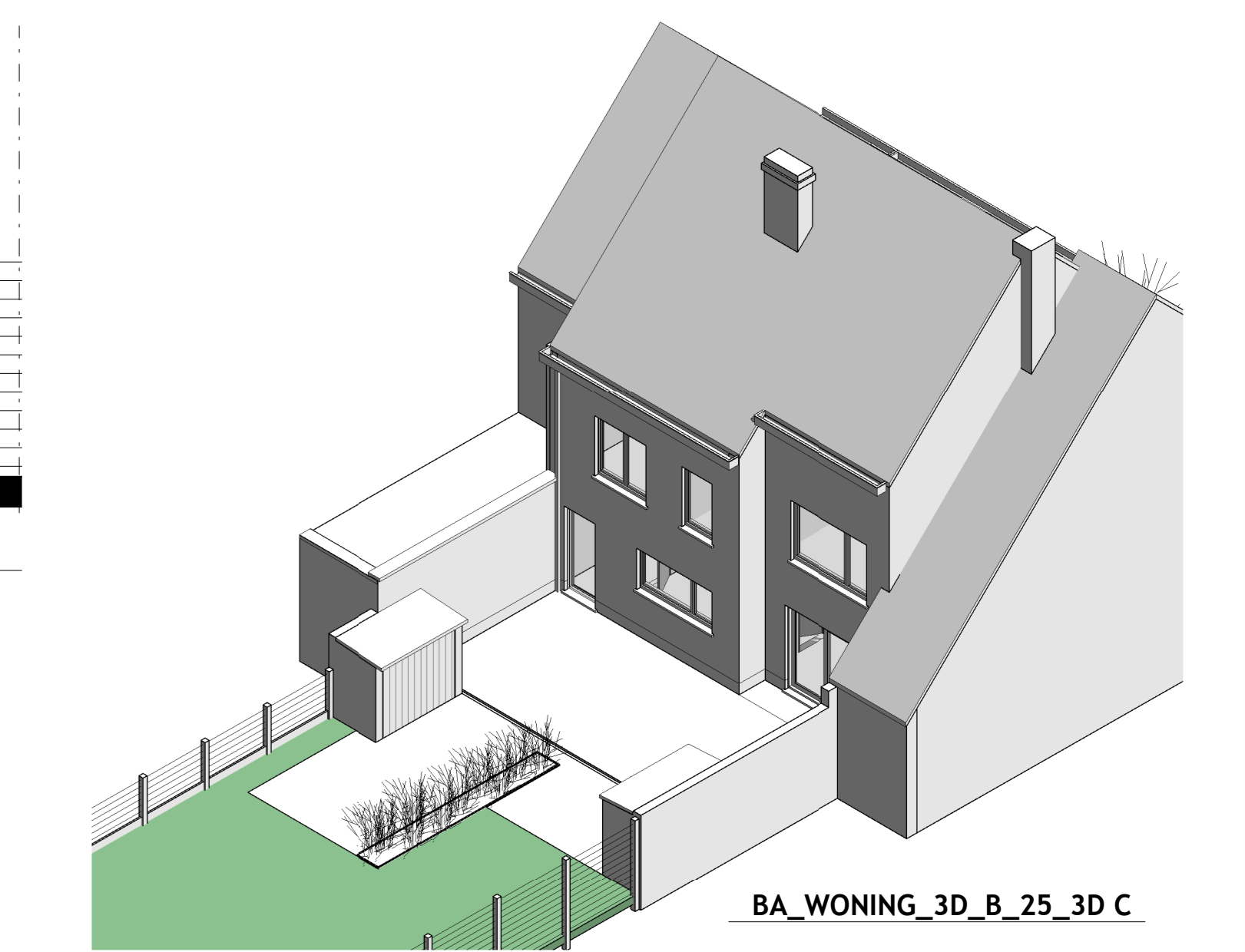
BA_WONING_G_B_20_ACHTERGEVEL
1:50



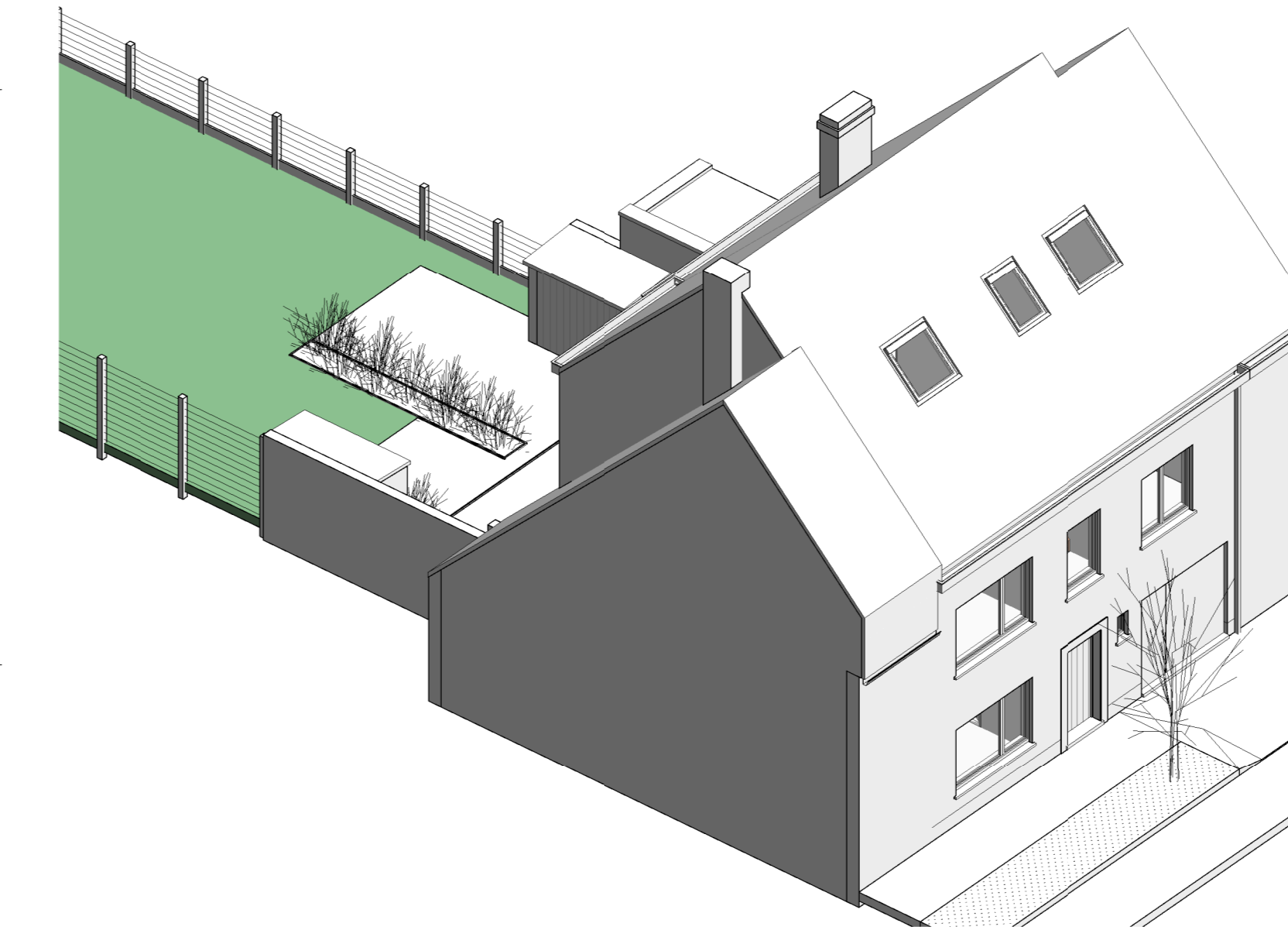
BA_WONING_S_B_22_DOORSNEDE BB
1:50



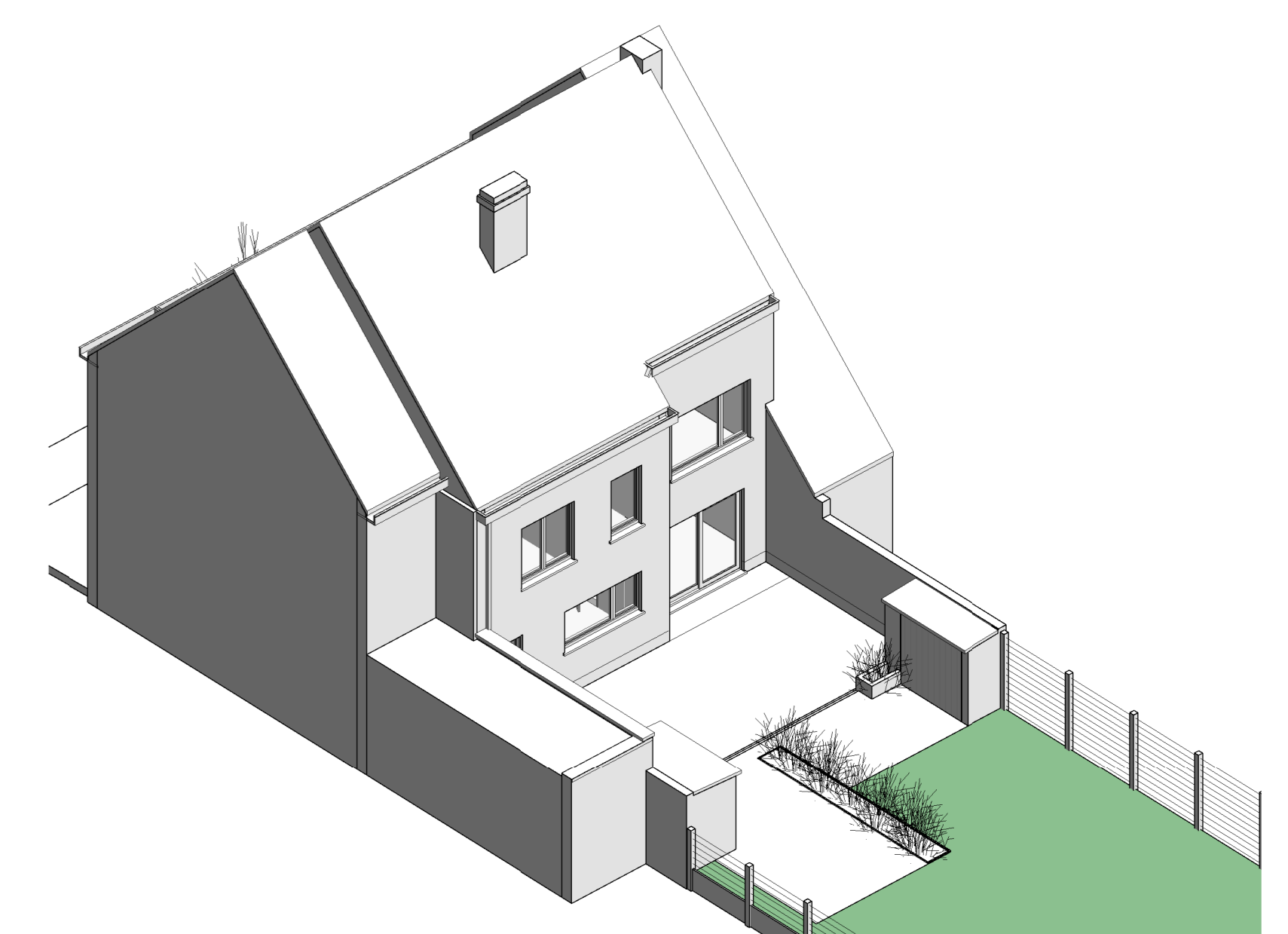
BA_WONING_3D_B_23_3D A



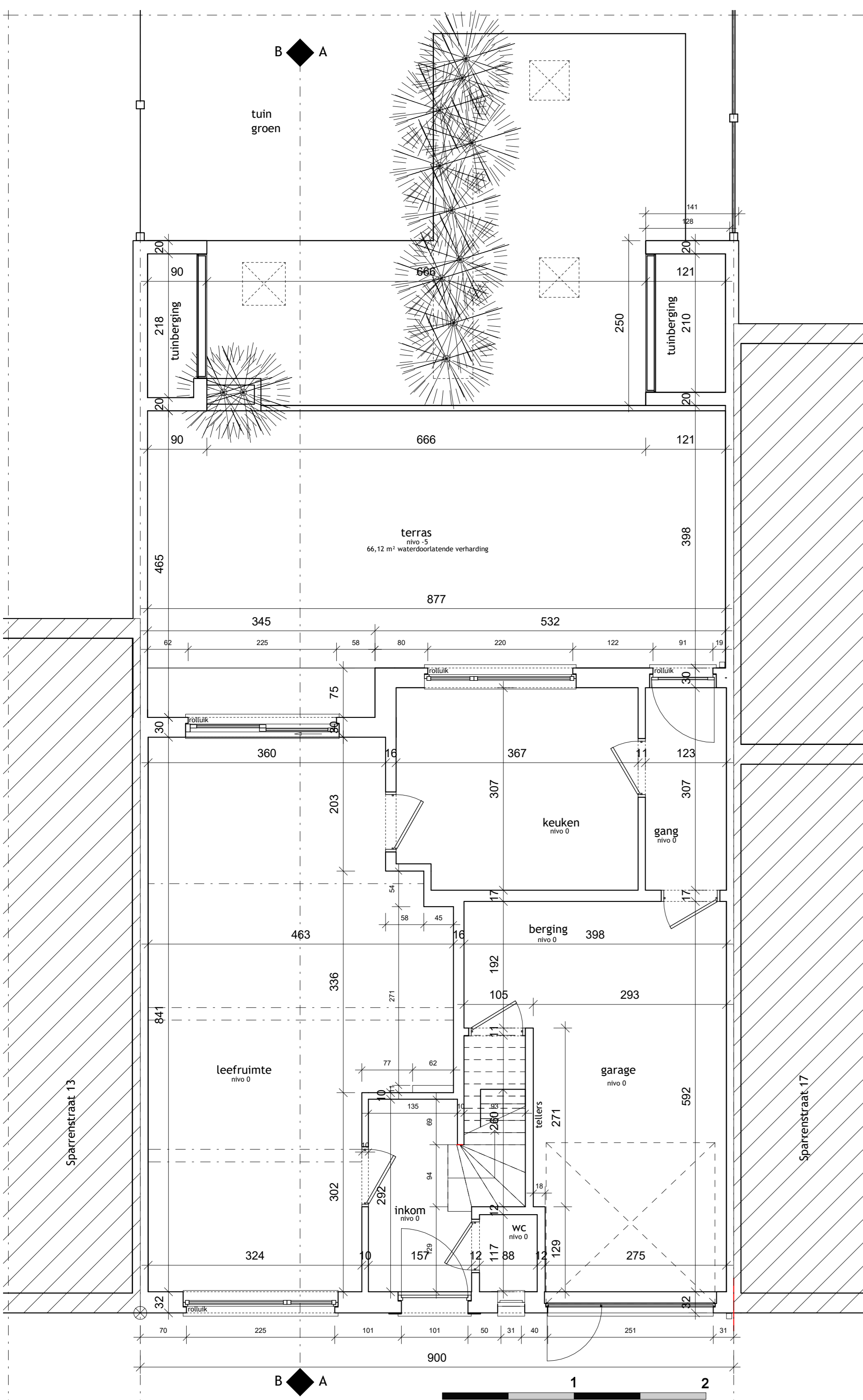
BA_WONING_3D_B_25_3D C



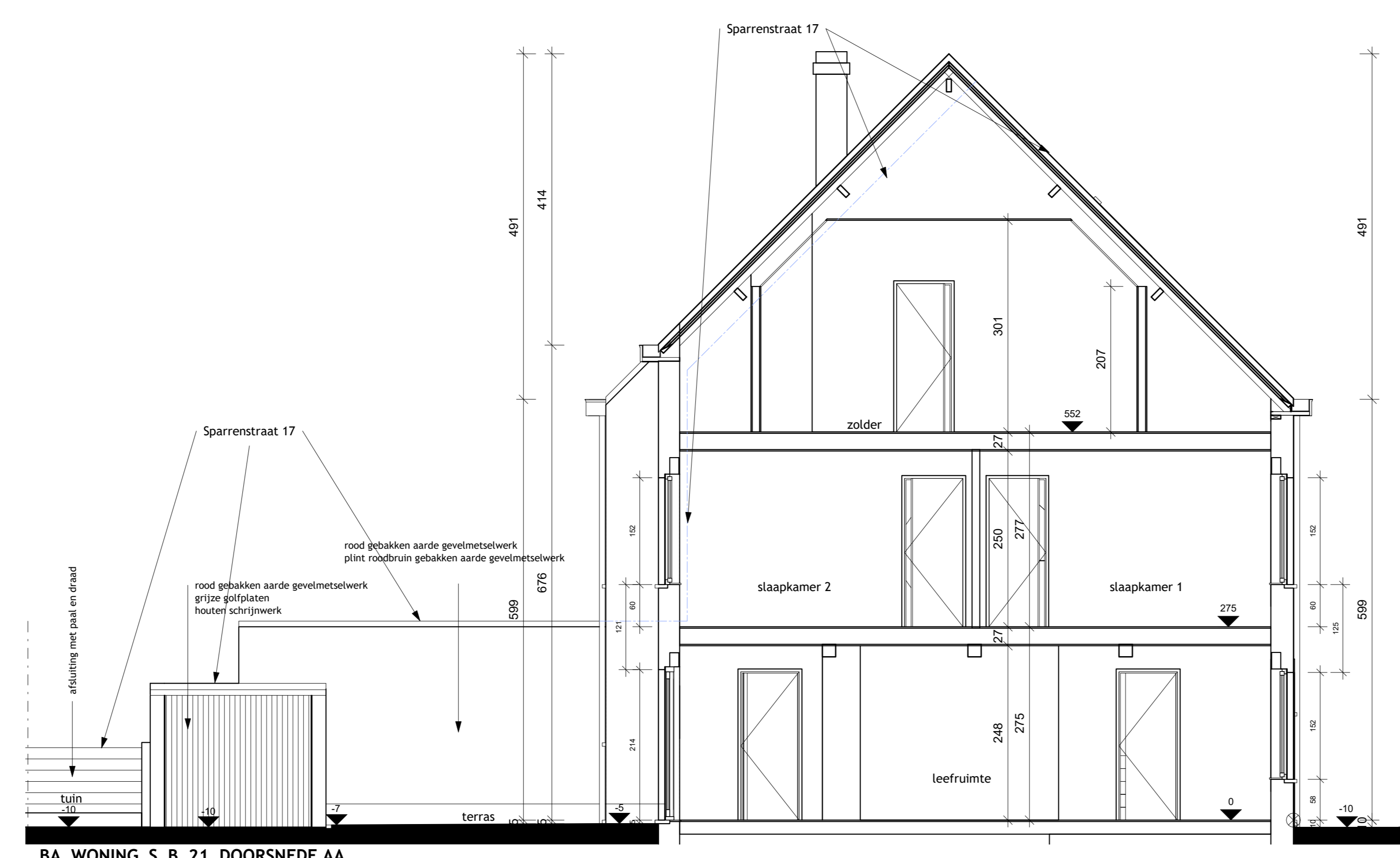
BA_WONING_3D_B_26_3D D



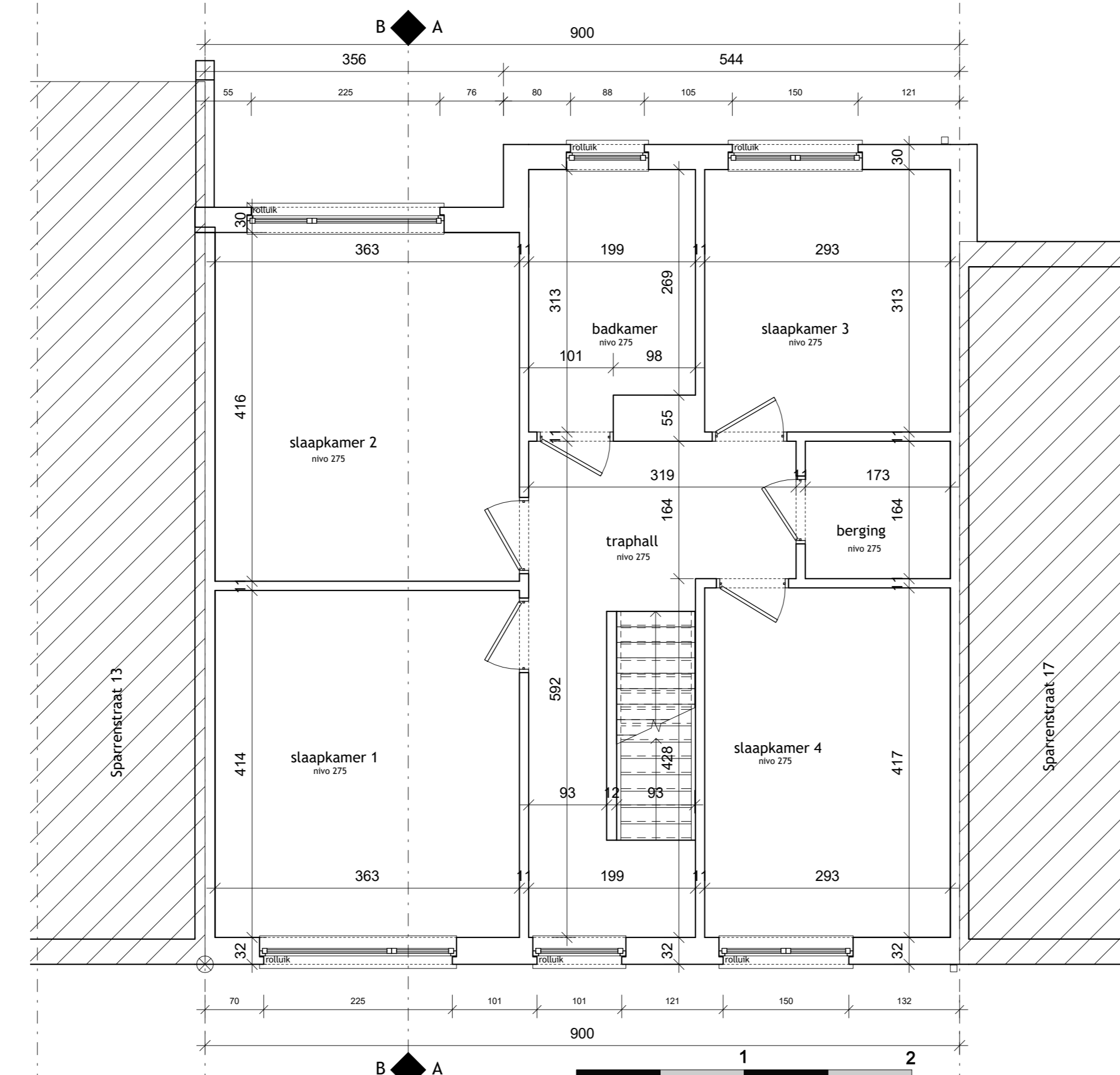
BA_WONING_3D_B_24_3D B



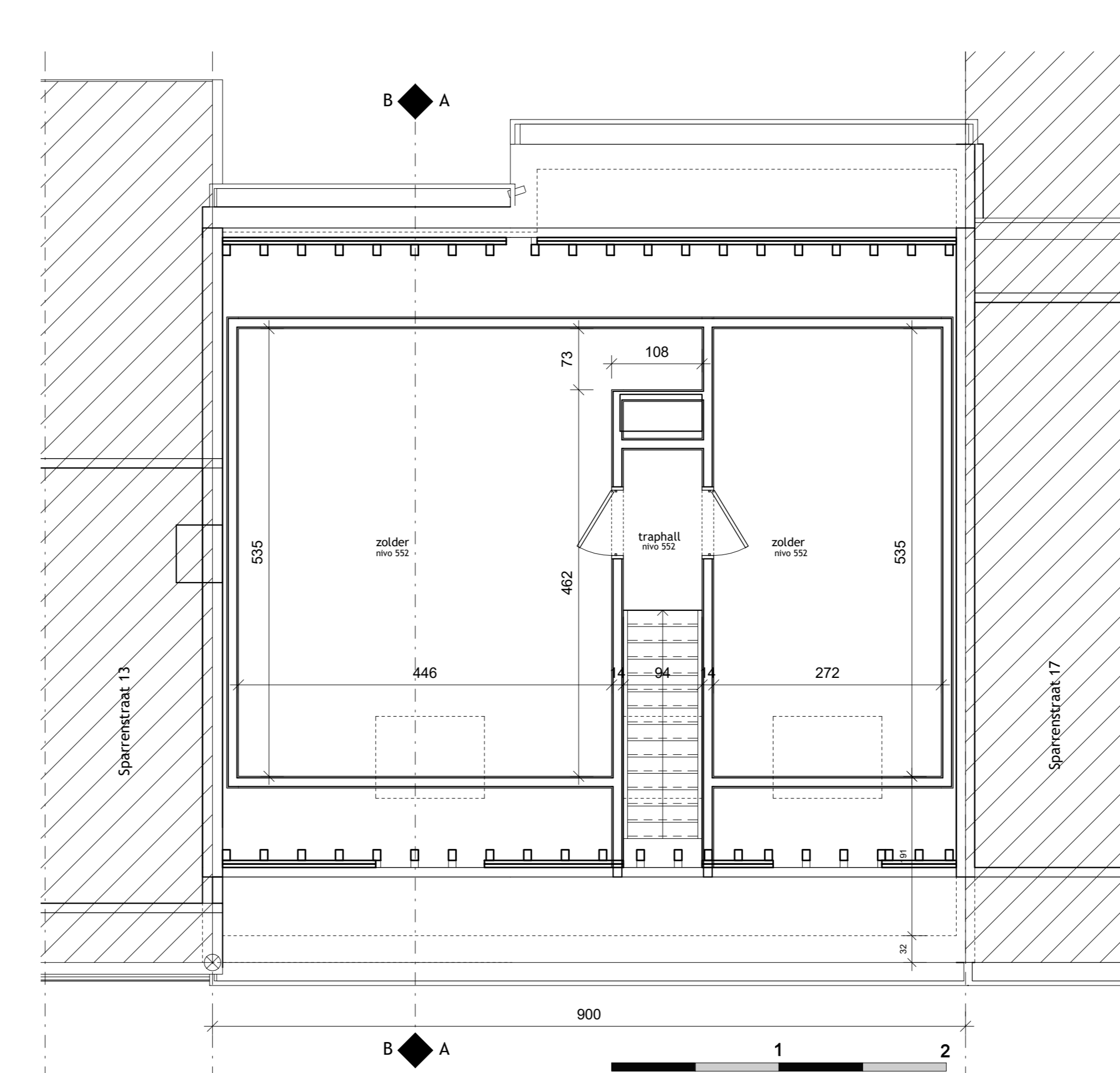
BA_WONING_P_B_16_GRONDPLAN
1:50



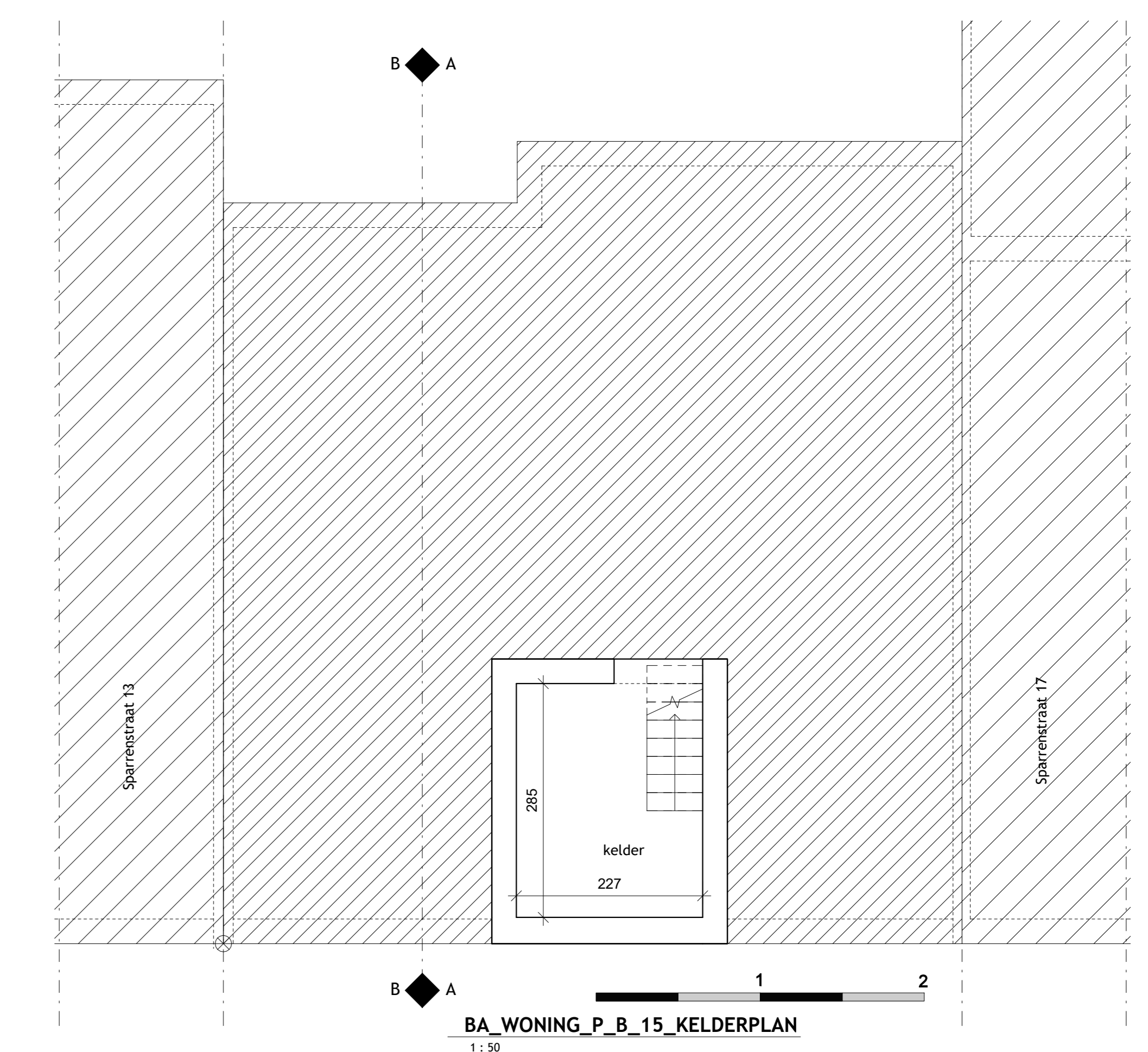
BA_WONING_S_B_21_DOORSNEDE AA
1:50



BA_WONING_P_B_17_VERDIEPINGSPLAN
1:50



BA_WONING_P_B_18_ZOLDERPLAN
1:50



BA_WONING_P_B_15_KELDERPLAN
1:50

DOSSIER		OPDRACHTGEVER		ARCHITECT	
doosnr nr. 1	2018-409	WERFADRES	BA-310	Alstebroek	ARCHITECT
plan	1 - BESTAANDE TOESTAND	BA-310	Alstebroek	Alstebroek	ARCHITECT
plan nr.	01A1 - PLAN 4 - BESTAANDE TOESTAND	BA-310	Alstebroek	Alstebroek	ARCHITECT
datum	25/02/2018	BA-310	Alstebroek	Alstebroek	ARCHITECT
school	2008-georgebouw	BA-310	Alstebroek	Alstebroek	ARCHITECT